



www.evoproducts.com.au

Why is the EVO system superior ?

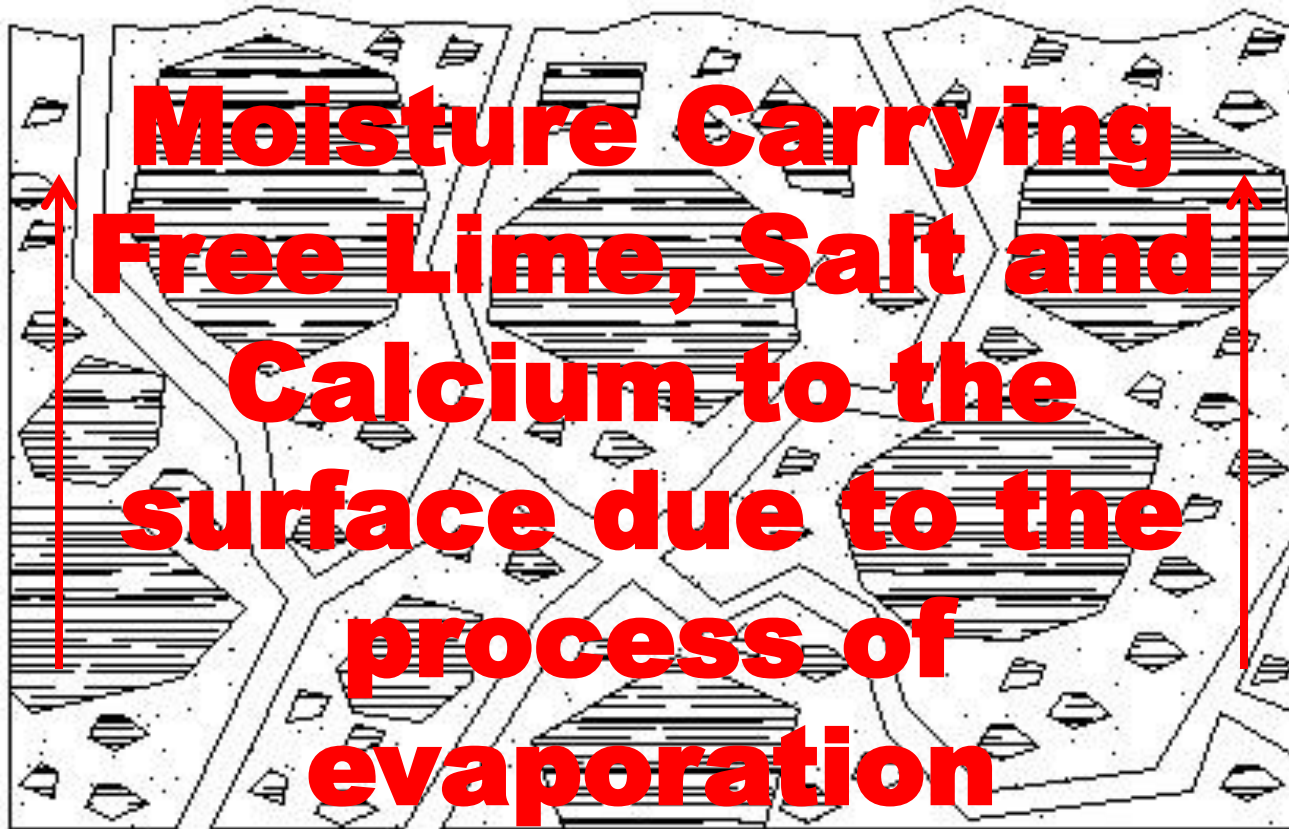
Evo is a waterproofing compound not of water resistant composition.

Created from 12 year U.S technology, environmentally safe, water based, UV stable, chemically resistant permanent polyester polymer chemistry that can be coated with paints, rendered or left natural, when introduced into concrete and masonry, fills and hardens the pore and capillary tracts giving the surface interface up to a possible further 15% compressive strength therefore restricting moisture from entering through the matrix, eliminating the threat of water and any possible efflorescence from ever reaching the surface. Existing marketed sealants which cannot be coated or rendered have a base chemistry of either acrylic, silane or siloxane (most petroleum based) which are only temporary surface sealants and therefore subject to wearing and weathering and tend to migrate from the surface.

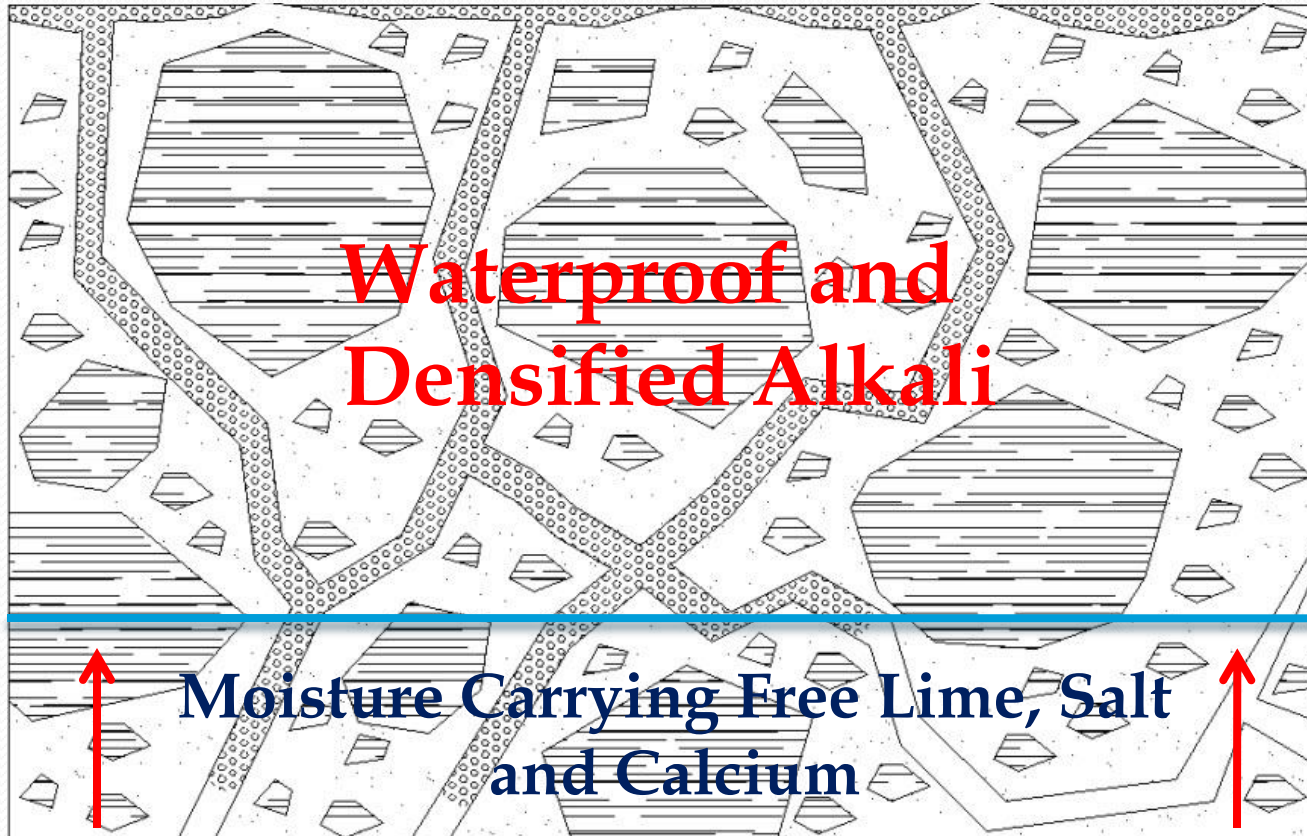
Used in conjunction with the Evo cleaning systems for preventive and remedial situations will provide a 10 year warranty.



CONCRETE CROSS SECTION CAPILLARY SYSTEM

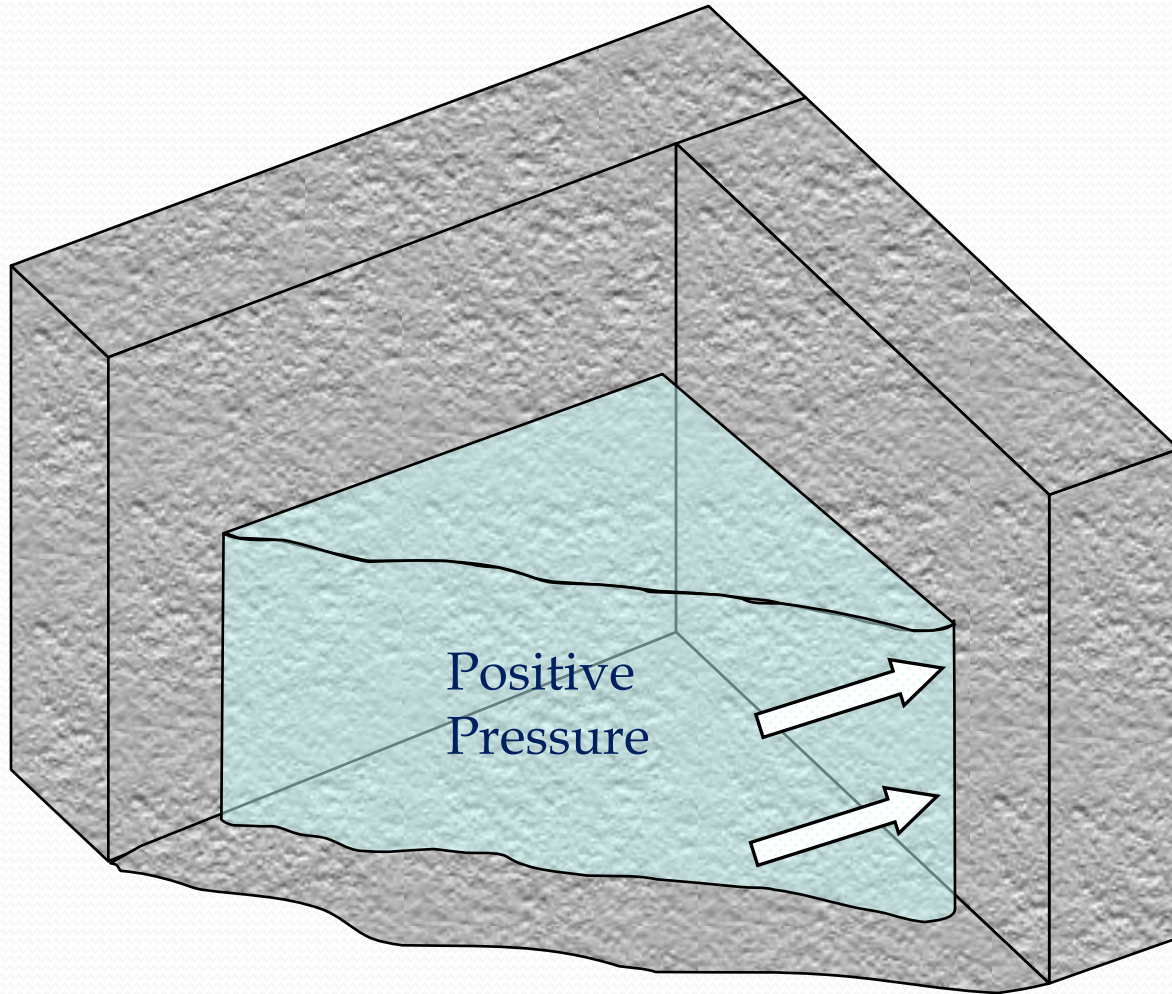


CURED EVO SYSTEM

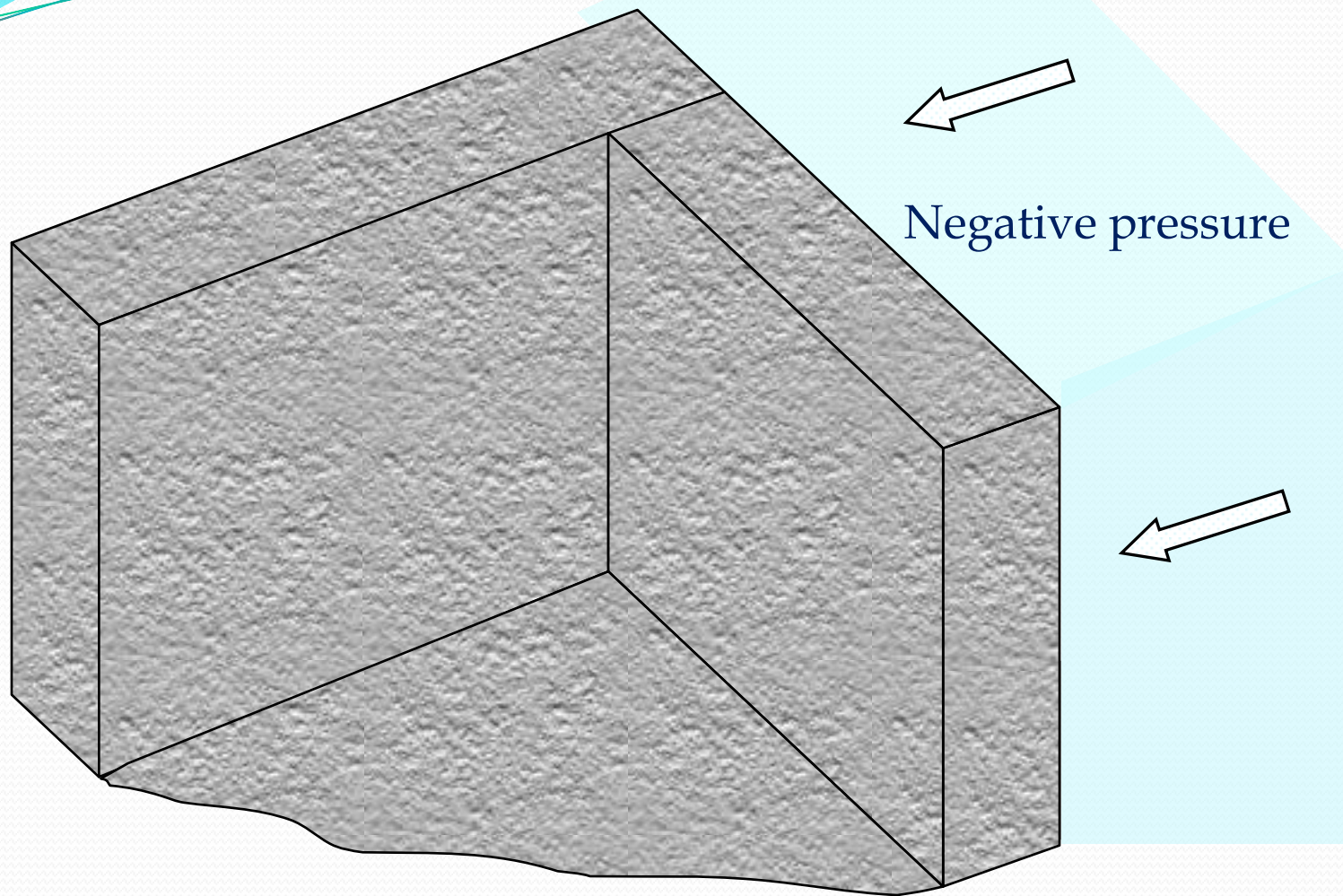


Up to 100mm penetration
through capillary action

Evo Seal Positive Pressure withstands 60 Psi (4.1 BAR)



Evo Seal Indirect Pressure Tested to withstands 60Psi (4.1 BAR)



EVO WATERPROOFING



EVO-SEAL can penetrate up to 100 mm in concrete, it is a transparent, water based, UV stable static/hydrostatic waterproofing system base chemistry saturate outperforming all silane based and standard acrylic solutions tested to 4 bar (60psi). Eliminates rising damp, hydrostatic water pressure and the threat of efflorescence. Used for concrete, render, bricks and natural stone.



EVO-TRAFFICSEAL is a penetrating colourless, negative pressure to 4 Bar transparent liquid impregnate, Manufactured with Evo Seal base chemistry, incorporating a topical UV stable polyurethane surface film, Will provide a tough durable surface finish suitable for concrete slabs with vehicular traffic. Eliminates rising damp, hydrostatic water pressure, dusting and deterioration through cyclic movement



EVO-BLOCKSEAL is a penetrating is a penetrating colourless, negative pressure to 4 Bar transparent liquid impregnate, Manufactured with Evo Seal base chemistry, incorporating an industrial strength UV stable acrylic tested to 4 Bar (60 psi). Eliminates rising damp and hydrostatic water pressure, Fro use with cement block and large pored surfaces.



EVO-SHOWERSEAL is a penetrating colourless, inorganic transparent liquid- **outperforming all SILANE/SILOXANE and ACRYLIC solutions.** For existing tiled areas to seal and waterproof grout and concrete sub tile beds. Eliminates rising damp and hydrostatic water pressure.



EVO INDUSTRIAL CLEANING FORMULATIONS



EVO-SALTAWAY is an INDUSTRIAL STRENGTH efflorescence (SALT) remover specially formulated for industrial, commercial and residential use. Used in conjunction with the Evo Seal waterproofing system.



EVO-POWERCLEAN is high strength, all purpose concentrated degreaser and cleaning formulation, containing surfactants specially formulated for industrial, commercial and high strength residential use. Used for cleaning organics and dirt prior to sealing.



EVO-CONCRETECLEAN is fluid applied degreaser and cleaner specially formulated for industrial, commercial and residential use that restores the natural colour of new concrete and used prior to sealing.



EVO-BOND is a 100% ACRYLIC INDUSTRIAL STRENGTH admixture. A longer lasting acrylic composition for adding to cement mixtures for better workability and unequalled render adhesion to non porous surfaces.





Testing Accreditation



ASTM C-31: Increase of Compressive Strength in concrete tested with Evo – Seal™

ASTM C-672: Chloride Penetration Resistance - No Chloride Penetration at any depth.

ASTM - 413: Water Absorption of Chemical Resistant Concrete/Mortar Surfaces. Test Results show concrete positively waterproofed, inhibiting corrosion.

ASTM C-67: Section 10: Efflorescence

AASHTO- T259 - 89: Chloride Ion Penetration



BS 1881: Part 122 : Method for determination of Water Absorption.

BS - 1881 - 122: 1983 : - Water absorption of concrete cylinders.



AS 1012.21: - Standard test method for density and absorption. Shall not exceed 1.0% after 48 hours or 2.0% after 50 days.

GHD Engineering



Negative Hydrostatic Pressure Test. :- Passed 60 psi. no visible failure. Procedure for determination of Water Permeability of Concrete. GHD standard test method.



Typical Uses :

- Prevention and curing rising damp in structures.
- Eliminating efflorescence.(salt)
- Solutions for peeling paint on masonry surfaces
- Waterproofing retaining walls and water through brickwork
- Waterproofing and densification of tile beds before or after tiling.
- Waterproofing and densification of concrete slabs.
- Waterproofing bricks & blocks.
- Hardening and sealing natural stone, marble, granite etc
- Sealing and waterproofing porous tiles.
- Hardening of grouts and gypsums.
- Application under elastomeric waterproofing membranes to prevent de-lamination due to evaporation or hydrostatic pressure.



**MASONRY
WATERPROOFING
SYSTEMS**

Waterproofing Brickwork

EVO
PRODUCT RANGE



Waterproofing Cement Blocks and Retaining Walls

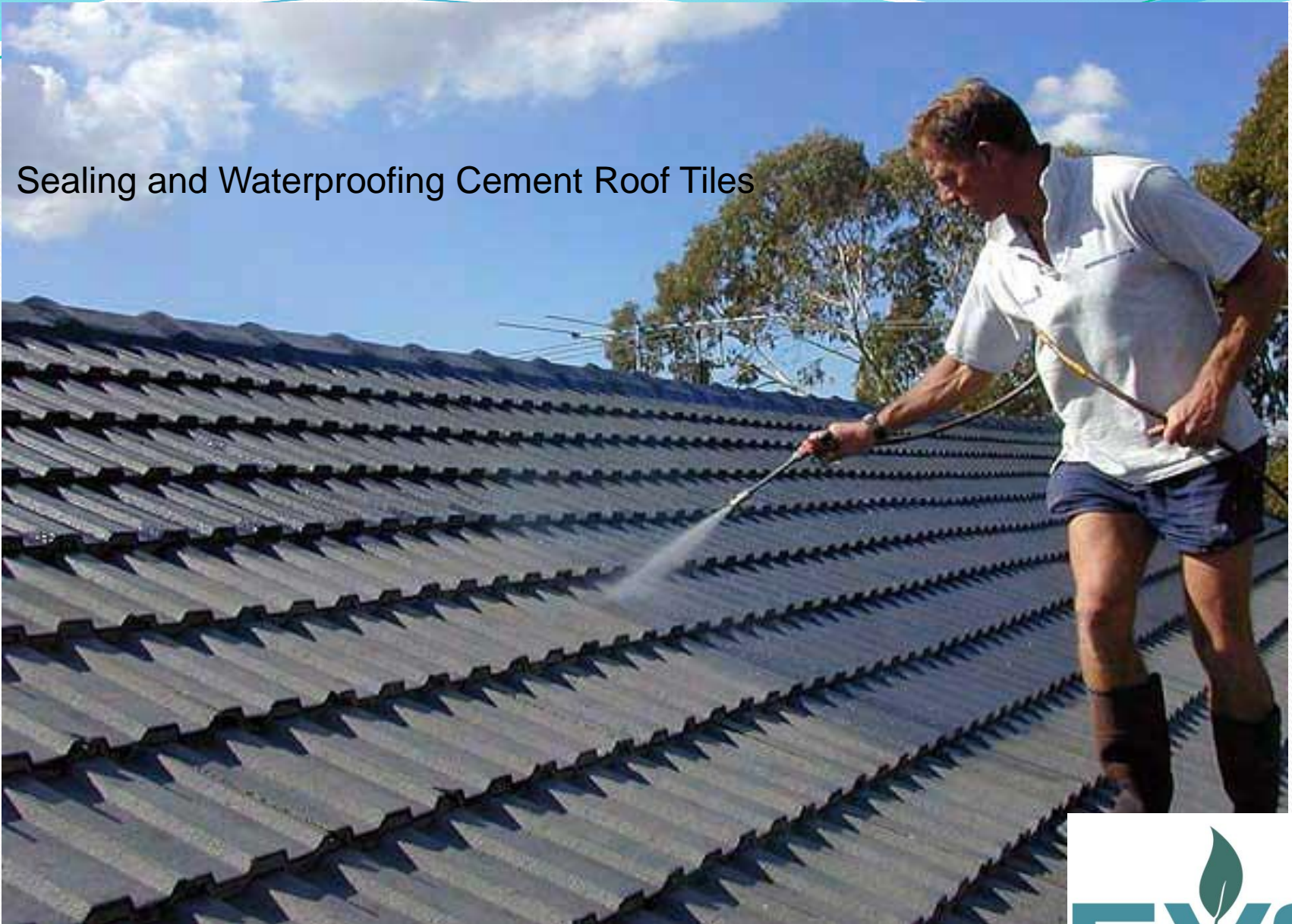


Concrete Slab Waterproofing and Densification

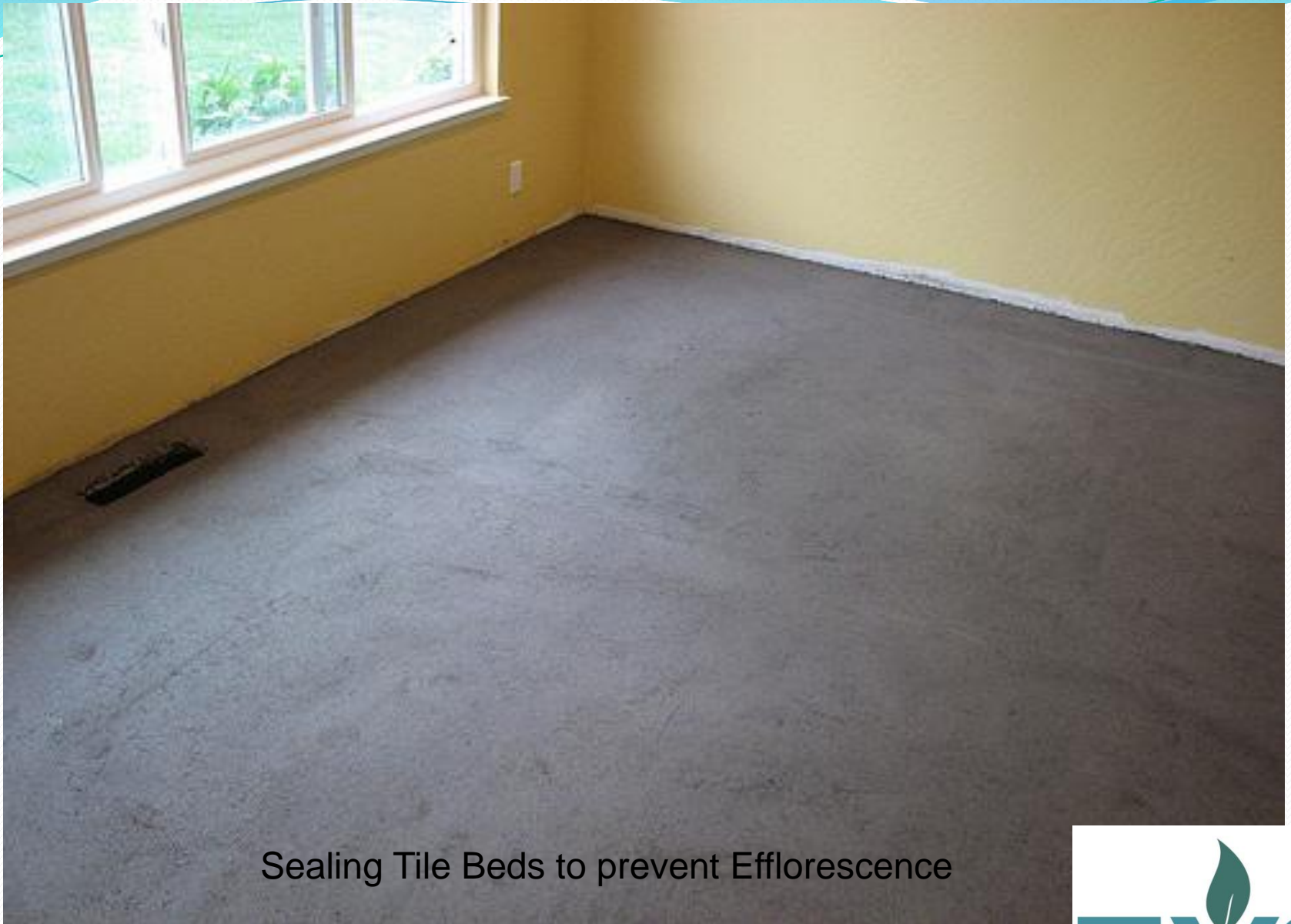


Tile and Paver Waterproofing

Sealing and Waterproofing Cement Roof Tiles



Cleaning and Sealing Efflorescence



Sealing Tile Beds to prevent Efflorescence





Seals, Waterproofs and Hardens Natural Stone



2L, 5L, 20L, & 200L Packaging

